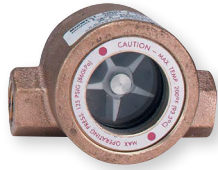




SERIES SFI-100, SFI-300, SFI-300F, SFI-400 & SFI-700 | W. E. ANDERSON™ BY DWYER

# MIDWEST SIGHT FLOW INDICATORS

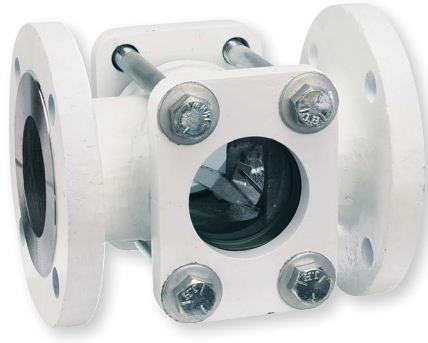
## Inexpensive Protection for Expensive Equipment and Systems



Model 100, 100MP ++



Model 300, 300MP ++



Model 360F



Model 400



Model 700 ++

The **SERIES SFI** Sight Flow Indicators is a Series of sight indicators which display flow or contents of pipelines. Available in window viewing style in the SFI-100 and SFI-300 Series and tube viewing style in the SFI-400 and SFI-700 Series with connection choices of female NPT, BSP or BSPT threaded and flanged.

**SERIES SFI-100 & SFI-300** Sight Flow Indicators offer threaded process connections, viewing windows, and bodies of brass or 316 SS. The SFI-100 type has a single window with a rotating impeller, the 300 type has a double window with a rotating impeller, the SFI-350 type has a double window with no moving indicator, and the SFI-360 type has a double window with a flapper.

**SERIES SFI-300F** Sight Flow Indicators offer ANSI flange process connections, double viewing windows, and bodies of carbon steel or 316 SS. The SFI-350F type has a double window with no moving indicator and the SFI-360F type has a double window with a flapper.

**SERIES SFI-400** Sight Flow Indicators offer threaded or ANSI flanged process connections, tube style viewing, and bodies of cast iron or 316 SS.

**SERIES SFI-700** Sight Flow Indicators offer threaded process connections, tube style viewing, and bodies of brass or 316 SS.

### FEATURES/BENEFITS

- Manufactured of quality materials and safety tested to assure long, dependable service at economical prices
- All Series SFI-100, SFI-300 and SFI-300F feature a removable window for easy service and replacement of wearing parts
- The Series SFI-400 features glass tube construction offering easy flow viewing from any angle
- Series SFI-700 offers an easy to see bright red Acetal rotating impeller that is easy to view from any angle with the glass tube construction
- Maintenance is simple for the Series SFI-700 with internal wipers which restore full 360° visibility by simply rotating the glass tube without disrupting the flow

### APPLICATIONS

- Hydraulic tanks
- Pressure vessels
- Coolant tanks
- Hydraulic lines
- Oil reservoirs

### MODEL CHART

Model	Description
SFI-100	Single window with impeller
SFI-300	Double window with impeller
SFI-350	Double window with no indicator
SFI-360	Double window with flapper
SFI-400	Tube type with no indicator
SFI-700	Tube type with impeller and internal wipers to clean glass tube

### SPECIFICATIONS

#### SFI-100 & SFI-300 SPECIFICATIONS

**Service:** Compatible gases and liquids.  
**Wetted Materials:** Window: Tempered glass; Body: Bronze or 316 SS; Gasket: Buna-N, fluoroelastomer or PTFE; Indicator: ABS or 316 SS impeller (100 and 300), 304 SS or 316 SS flapper (360).  
**Temperature Limit:** 200°F (93°C); 120°F (48°C) on W2 option; 170°F (77°C) on I1 option.  
**Pressure Limit:** 125 psig (8.62 bar), 150 psig (10.34 bar) on "MP" models.  
**Connections:** Threaded.  
**Mounting Orientation:** Horizontal or vertical; 360: Horizontal only.

#### SFI-300F SPECIFICATIONS

**Service:** Compatible gases and liquids.  
**Wetted Materials:** Window: Tempered glass; Body: Carbon steel or 316 SS; Gasket: Buna-N, fluoroelastomer or PTFE; Indicator: 316 SS flapper (360).  
**Temperature Limit:** 200°F (93°C).  
**Pressure Limit:** 150 psig (10.34 bar).  
**Connections:** Flanged.  
**Mounting Orientation:** Horizontal or vertical; 360: Horizontal only.

#### SFI-400 SPECIFICATIONS

**Service:** Compatible gases and liquids.  
**Wetted Materials:** Tube: Borosilicate; Body: Cast iron or 316 SS; Gasket: PTFE.  
**Temperature Limit:** 200°F (93°C).  
**Pressure Limit:** 50 psig (3.45 bar).  
**Connections:** Threaded or flanged.

#### SFI-700 SPECIFICATIONS

**Service:** Compatible gases and liquids.  
**Wetted Materials:** Tube: Tempered borosilicate; Body: Brass or 316 SS; Gasket: Fluoroelastomer; Indicator: Acetal.  
**Temperature Limit:** 212°F (100°C).  
**Pressure Limit:** 230 psig (15.86 bar).  
**Connections:** Threaded.

### DIMENSIONS AND WEIGHT

Model	Body Size	Length	Depth	Height	Flange Diameter	Viewing Area Diameter	Weight lb (kg)
SFI-100	1/4, 3/8	3.000 (76)	1.813 (46)	2.125 (54)	-	-	1.1 (0.5)
	1/2, 3/4	4.000 (102)	2.250 (57)	2.563 (65)	-	-	1.5 (0.7)
	1, 1-1/4	4.375 (111)	2.563 (65)	2.625 (67)	-	-	2.7 (1.2)
	1-1/2, 2	5.688 (144)	3.250 (83)	3.625 (83)	-	-	5.5 (2.5)
SFI-300	1/4, 3/8	3.063 (78)	2.250 (57)	2.125 (54)	-	-	1.7 (0.8)
	1/2, 3/4	4.063 (103)	2.750 (70)	2.563 (65)	-	-	2.6 (1.2)
	1, 1-1/4	4.375 (111)	3.125 (79)	2.563 (65)	-	-	3.0 (1.4)
	1-1/2, 2	5.500 (140)	3.688 (93)	4.063 (103)	-	-	7.0 (3.2)
SFI-700	1/4, 3/8	2.750 (70)	-	1.500 (38)	-	-	0.9 (0.4)
	1/2, 3/4	3.688 (94)	-	2.250 (57)	-	-	2.4 (1.1)
	1, 1-1/4, 1-1/2	4.875 (124)	-	2.750 (70) (across flats)	-	-	5.1 (2.3)
SFI-400	1/2	4.500 (144)	-	-	3.500 (89)	1.500 (38)	3.8 (1.7)
	3/4	5.125 (130)	-	-	3.875 (98)	1.750 (44)	4.8 (2.2)
	1	5.625 (143)	-	-	4.250 (108)	2.000 (51)	6.2 (2.8)
	1-1/4	5.750 (146)	-	-	4.625 (117)	2.000 (51)	7.6 (3.5)
	1-1/2	5.875 (149)	-	-	5.000 (127)	2.500 (64)	8.7 (4.0)
	2	6.125 (156)	-	-	6.000 (152)	3.000 (76)	13 (6.0)
	3	6.250 (159)	-	-	7.500 (191)	4.000 (102)	17 (7.7)
	4	6.250 (159)	-	-	9.000 (229)	5.000 (127)	25 (11.0)
SFI-400F	1	5.000 (127)	-	-	4.250 (108)	2.000 (51)	7 (3.2)
	1-1/4	5.125 (130)	-	-	4.625 (117)	2.000 (51)	8 (3.6)
	1-1/2	5.250 (133)	-	-	5.000 (127)	2.500 (64)	12 (5.5)
	2	5.370 (137)	-	-	6.000 (152)	3.000 (76)	14 (6.4)
	3	5.750 (146)	-	-	7.500 (191)	4.000 (102)	23 (10.4)
SFI-300F	1-1/2	6.375 (162)	-	-	5.000 (127)	2.313 (58)	12 (5.5)
	2	6.500 (165)	-	-	6.000 (152)	2.313 (58)	16 (7.5)
	3	8.875 (225)	-	-	7.500 (191)	3.000 (76)	38 (17)
	4	10.250 (260)	-	-	9.000 (229)	4.000 (102)	56 (25)
	6	12.500 (318)	-	-	11.000 (279)	6.000 (152)	120 (55)

Dimensions are in inches (mm)

++ USA: California Proposition 65

▲WARNING: Cancer and Reproductive Harm  
[www.P65Warnings.ca.gov](http://www.P65Warnings.ca.gov)

# MIDWEST SIGHT FLOW INDICATORS

## Inexpensive Protection for Expensive Equipment and Systems

MODEL CHART						
SFI-100 & SFI-300 - WINDOW STYLE WITH THREADED CONNECTIONS						
Example	SFI	-300	SS	-2	-G2	SFI-300SS-2-G2
<b>Model Designator</b>	SFI					Sight flow indicator
<b>Body Style</b>		100 300 350 360				Single window, bronze body, ABS impeller Double window, bronze body, ABS impeller Double window, bronze body, no moving indicator Double window, bronze body, 304SS flapper
<b>Body Options</b>			SS MP			316SS body option for 300, 350, 360 150 psig maximum pressure option, includes fluoroelastomer gaskets
<b>Body Size</b>				1/4 3/8 1/2 3/4 1 1-1/4 1-1/2 2		1/4 inch connection size 3/8 inch connection size 1/2 inch connection size 3/4 inch connection size 1 inch connection size 1-1/4 inch connection size 1-1/2 inch connection size 2 inch connection size
<b>Options</b>					W2 G1 G2 S2 S3 I1 I2 I3 F1 BSPT BSPP	Plexiglass window PTFE gasket Fluoroelastomer gasket 316SS shaft (not on 350 model) Monel shaft (not on 350 model) ABS impeller with bronze bushing (not on 350, 360) 316SS impeller (not on 350, 360) No impeller (100 only) 316SS flapper (360 only) BSPT threads BSPP threads

**Note:** Maximum flow on impeller models: 5 FPS with liquids, 5000 FPM with gases

MODEL CHART				
SFI-400 - TUBE STYLE WITH THREADED OR FLANGED CONNECTIONS				
Example	SFI	-400SS	-1-1/2	SFI-400SS-1-1/2
<b>Model Designator</b>	SFI			Sight flow indicator
<b>Body Style</b>		400CI 400SS 400F		Female NPT connections, cast iron body (only for 1 through 2 inch sizes) Female NPT connections, 316SS body Raised face flange connection, 316SS body (only for 1 inch and up sizes)
<b>Body Size</b>			1/2 3/4 1 1-1/4 1-1/2 2 3 4	1/2 inch connection size 3/4 inch connection size 1 inch connection size 1-1/4 inch connection size 1-1/2 inch connection size 2 inch connection size 3 inch connection size 4 inch connection size

**Note:** Best for use in vertical pipelines where there are no mechanical strains

MODEL CHART					
SFI-300F - WINDOW STYLE WITH FLANGED CONNECTIONS					
Example	SFI	-360FSS	-1-1/2	-G1	SFI-360FSS-1-1/2-G1
<b>Model Designator</b>	SFI				Sight flow indicator
<b>Body Style</b>		350FCS 350FSS 360FCS 360FSS			Carbon steel body, no moving indicator 316SS body, no moving 316SS indicator Carbon steel body, 316SS flapper 316SS body, 316SS flapper
<b>Body Size</b>			1-1/2 2 3 4 6		1-1/2 inch raised face flange connection size 2 inch raised face flange connection size 3 inch raised face flange connection size 4 inch raised face flange connection size 6 inch raised face flange connection size
<b>Options</b>				G1 G2	PTFE gasket Fluoroelastomer gasket

MODEL CHART					
SFI-700 - TUBE STYLE WITH THREADED CONNECTIONS					
Example	SFI	-700SS	-1-1/2	-BSPT	SFI-700SS-1-1/2-BSPT
<b>Model Designator</b>	SFI				Sight flow indicator
<b>Body Style</b>		700 700SS			Brass body 316SS body
<b>Body Size</b>			1/4 3/8 1/2 3/4 1 1-1/4 1-1/2		1/4 inch female NPT connection size 3/8 inch female NPT connection size 1/2 inch female NPT connection size 3/4 inch female NPT connection size 1 inch female NPT connection size 1-1/4 inch female NPT connection size 1-1/2 inch female NPT connection size
<b>Options</b>				BSPT BSPP	BSPT threads BSPP threads