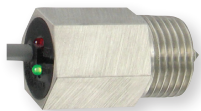
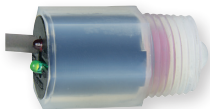
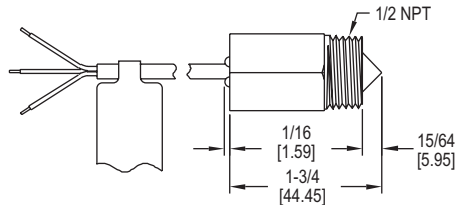


Dwyer**SERIES OLS | W.E. ANDERSON™ BY DWYER**

OPTITROL® OPTICAL LEVEL SWITCH

Low Cost, Compact, LED Indication, No Moving Parts

**OLS-10****OLS-11****OLS-12**

The **SERIES OLS** Optical Level Switches is a low cost, rugged optical level switch that indicate the presence or absence of liquid via infrared light that is reflected back through the prism lens. This series offers three optional materials, 316 SS, polysulfone and PFA.

FEATURES/BENEFITS

- Provides rapid response while employing no moving parts for stable process control
- Bright red and green LED's indicate the presence or absence of liquid for true, local indication
- Three optional materials, 316 SS, polysulfone and PFA provide application flexibility
- Compact switch can be quickly mounted horizontally or vertically for each installation

APPLICATIONS

- Food and beverage systems
- Liquid holding tanks
- Hydraulic reservoirs
- Pharmaceutical systems
- Air conditioning systems
- Sumps

SPECIFICATIONS

Service: Noncoating compatible liquids.

Wetted Materials: See model chart.

Temperature Limit: Process: OLS-10, 11: 200°F (93.3°C), OLS-12: 120°F (48.9°C); Ambient: OLS-10, 11: 175°F (79.4°C), OLS-12: 120°F (48.9°C).

Pressure Limit: OLS-11, 12: 200 psig (13.8 bar); OLS-10: 1000 psig (69 bar).

Repeatability: ±0.02" (0.5 mm).

Switch Type: NPN open collector.

Power Requirements: 10 to 28 VDC.

Output Signal: Vout (max) = 28 VDC, Isink (max) = 100 mA.

Current Consumption: 35 mA max.

Electrical Connections: 38" (965.2 mm) 3 conductor cable, 22 AWG wire.

Process Connection: 1/2" male NPT.

Mounting Orientation: Can be mounted in any position.

Specific Gravity: No min.

Weight: 3 oz (0.085 kg).

MODEL CHART

Model	Wetted Materials
OLS-10	316 SS/polysulfone
OLS-11	Polysulfone
OLS-12	PFA